

Mega Speed[®] MS35K 4S

FEATURES

Quality Control And Product Traceability

Suitable For High Definition Long Recording Frame Rates

Product Application

The MS35K 4S Is a high-speed quality control system providing 24/7 recorded video files for traceability and for diagnostic review of mission critical applications.

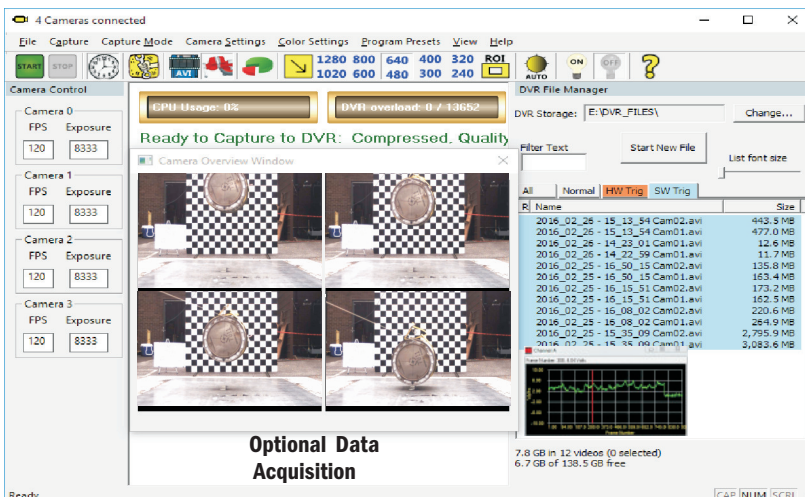
High speed, high resolution video streaming for short or long haul fiber optic or copper cable transmission using 1G, 2.5G or 10G.

Over 20 years of field proven dependable camera and software technology. Outstanding customer service.

The MS35K Fiber 4 S System is a purpose built mobile platform designed to be used with several different Mega Speed Cameras providing you with several speed range and connection options.



DVR 4SP



DVR 4S

One HDMI, three USB, up to 4 LC fiber ports and one LAN connection are available on the DVR rear panel. All ports can be IP 67 rated.

The Mega Speed MS 35K 4S camera control software is a complete software package that is included with each system. With the camera control software you can simultaneously adjust the camera settings, record the process, review the recently recorded events, edit, play back, review and transfer files without interrupting the recording process.

Mega Speed[®] MS35K 4S

FEATURES

Intuitive And Easy to Understand Menu Layout

The screenshot shows the software interface with several callout boxes:

- Main Menu:** Points to the top menu bar (File, Capture, DVR Settings, Camera Settings, Color Settings, View, Help).
- Main Toolbar:** Points to the top toolbar with icons for Start, Stop, Play, Pause, and other controls.
- DVR Status:** Points to the status bar showing EPU Usage: 1% and DVR overload: 0 / 6144.
- File Manager Pane:** Points to the right-hand pane showing a list of captured video files.
- Camera Control Pane:** Points to the left-hand pane showing settings for Camera 1 and Camera 2 (FPS, Exposure).
- Preview Window:** Points to the central video preview area with playback controls and a frame counter.

R	Name	Size
	2016_04_25 - 11_56_45.avi	2.0 MB
	2016_04_25 - 11_56_38.avi	6.2 MB
	2016_04_25 - 11_56_36.avi	4.5 MB
	2016_04_25 - 11_56_33.avi	5.7 MB
	2016_04_25 - 11_46_19.avi	31.5 MB
	2016_04_25 - 11_37_51.avi	5.3 MB
	2016_04_25 - 11_37_22.avi	78.3 MB
	2016_04_25 - 11_36_38.avi	57.2 MB
	2016_04_25 - 11_35_26.avi	21.4 MB
	2016_04_25 - 10_50_35.avi	4,175.3 MB
	2016_04_25 - 10_36_41.avi	885.6 MB

File Stitching & Rotation Options For Multiple Cameras

The 'Stitch Options' dialog box includes the following settings:

- Camera Rotation:** Radio buttons for Rotate 0°, 90°, 180°, and 270°.
- Swap Camera positions:** A checkbox labeled 'Swap'.
- Change Stitch Type:** Radio buttons for Horizontal and Vertical.
- Visuals:** Two boxes labeled 'Cam1' and 'Cam2' with red arrows pointing upwards.

Flexible Recording Options

The 'File Length Options' dialog box includes the following settings:

- When capturing, automatically start new files:**
 - On Multiples of: 10 Minutes
 - After: 1 Hour Of Recording
- ie. If Capture is started at:** 12:13:05
- New files start at:** 13:13:00, 14:13:00, 15:13:00, 16:13:00, 17:13:00

Dynamic Region Of Interest Adjustments For Easy Setup

The 'Region Of Interest' dialog box includes the following settings:

- Camera Select:** A dropdown menu showing 'Camera 1' and 'Camera 2'.
- Lock To Center:** A checkbox.
- Center:** A button.
- Visuals:** A large gray square representing the camera's field of view with a smaller white square in the center representing the region of interest.
- Close:** A button at the bottom.

Mega Speed[®] MS35K 4S

FEATURES



- * Mega Pixel streaming at 1000 fps
- * VGA streaming at 2000 fps
- * LC fiber for long cable runs or copper cables for set-up and bench testing
- * Convenient "C" mount for easy lens selection.
- * High sensitive state of the art CMOS image sensors
- * Industry proven track record
- * Full featured control software

Consult with dealer for 1g, 2.5G or 10G speed vs resolution recording speeds before placing your order.

10G Camera Specifications

Sensor type:	Color or monochrome CMOS sensor. Determined at time of order.
Image sizes:	User defined from software pre-sets or custom selections.
Maximum resolution:	1920 x 1080
Minimum resolution:	64 x 64
Maximum speed	1000 fps at 1000 x 1000 or 500 fps at 1920 x 1080 image sizes.
Pixel size:	10 micron x 10 micron square pixel.
Shutter speed:	Global shutter 2 us to 30 ms in 1 us steps with exposure time tags.
Spectral response:	400nm to 1000nm.
ISO:	12,500 monochrome, 4000 color.
A-D converter:	10 bit.
Trigger in requirement:	3 to 24 VDC, active high through cameras rear BNC jack. Center pin positive.
Strobe out:	TTL 3.3 VDC via cameras rear BNC jack. Center pin positive active high on exposure.
Trigger modes:	Continuos capture mode. External hardware trigger source required for trigger modes
Editing software:	Image analysis, data acquisition, object tracking, AVI editing & MP4 image compression.
File saving:	User can save in RAW, AVI, JPEG, BMP, TIF, PNG or MP4 format to the DVR's hard drive.
Control software:	Mega Speed DVR Control software
Video live-view:	Live 30 fps preview to DVR monitor during recording.
Video recording:	Camera streams real time video back to the DVR.
Event tagging:	Captured video files can be sorted & marked manually or with an external hardware trigger.
Video Review:	Video review, editing and playback can be done at anytime when the DVR is recording real time video.
Networking:	Gigabit Ethernet cables, switches and connections can be used connecting the camera to the DVR.
Camera cable:	Short haul copper or long haul LC fiber cable.
Lens mount:	Standard "C" mount. "F" mount, "G" mount and electronic lens are all available as an option.
Camera size:	4.2" wide x 4.2" high x 6" long. ¼ x 20 tpi threaded camera mount hole
Camera weight:	2 lbs.
Camera body:	Machined anodized aluminum.
Power requirements:	3 amps @ 12 V DC. (36 watts)
Shock Rating:	50g for 15 milli-seconds 10 times all axis. Operational vibration meets 0.25g, from 5-500Hz.